

PRODUCT INFORMATION



VITADEE 100 CWD / 500 CWD
Cholecalciferol Concentrate (Powder Form)
DS (Dispersible Solution) / MS (Milky Solution) / S (Soluble)

Concentration: 100,000 IU/g, 500,000 IU/g

Product Identification:

Chemical Name:

(3β,5Z,7E)-9,10-secocholesta-5,7,10(19)-trien-3-ol

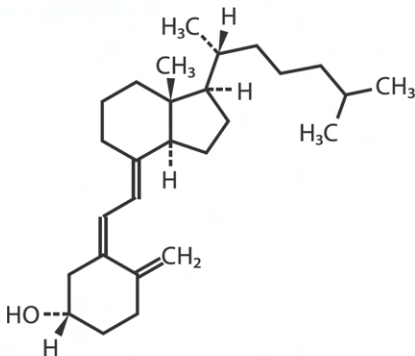
Mol Formula: C₂₇H₄₄O

Mol Weight: 384.64

CAS No.: 67-97-0

EINECS No.: 200-673-2

Structural Formula:



Description: White or yellowish white, small particles.

Specification: In-House

Assay: NLT 100.0%

Certifications: WHO-GMP, Kosher, Halal, HACCP, Vegetarian Certificate.

Packaging: Packed under inert gas in 1Kg & 5Kg Aluminium Bags.

Shelf Life: Proposed retest period of 24 months from the date of manufacture.

Storage: Vitadee CWD is sensitive to air, light and humidity. The product may be stored for 24 months from the date of manufacture in the unopened original container and at a temperature below 15°C . For optimum stability, storage at 5° ± 3°C is recommended. Keep container tightly closed. Once opened, use contents quickly.

Applications: For Fortifying Powder and Liquid Products such as Baby Food, Milk Powders, Multi-Vitamin Premixes and Tableting Application. Catering to the needs of Food, Dietary & Nutraceutical Supplements and Pharmaceutical Industry.

DS: Tableting application in Pharmaceuticals, Multi-Vitamin Premixes for Food and Nutraceutical Industry.

MS: Dairy Industry (Milk Fortification, Milk Powders etc.).

S: For fortifying Liquid Preparations (in Beverage Industry).



***Note:** Please refer the Material Safety Data Sheet before handling the product.



A PRODUCT OF
FERMENTA BIOTECH LIMITED